

# Comarch Business Intelligence for Medical segment

## Introduction

In modern medical clinics, controlling of costs, current monitoring of profitability, and advanced analytics of data that is loaded from various source systems, are the most important factors, that support decision-making process concerning company's performance.

In medical sector data often comes from many different IT systems, that are used for both white and grey areas of service.

Regardless of used software, Comarch Business Intelligence for medical segment integrates data from all source systems, enabling execution of multiple analyses, that cover all company's activities.

Thanks to Business Intelligence, owned data is used to build up a complex knowledge about medical institution and its surroundings, which enables to increase effectiveness of activities and ensures competitive advantage.

## Comarch Business Intelligence tools for Medical sector

Comarch especially for medical sector prepared set of functional tools, designed to:

- 1 Create and manage advanced reports, optimize costs, and model scenarios.
- 2 Access to reports via internet, and creation of online ad-hoc reports.
- 3 Solution that enables to access reports via mobile devices
- 4 Create and manage data warehouse

## Advantages of Comarch Business Intelligence systems

Comarch Business Intelligence solutions perfectly work out in companies, where data comes from many source systems, and requires cleansing and integration, and managers need to take key decisions based on knowledge, and not intuition or feelings.

The main advantages of BI solutions for medical sector are:

- Integration of data from different data sources
- Integration with tools designed to manage modern medical institutions: OPTI-MED24 and ERP systems by Comarch
- Optimization of processes through control and better usage of resources, optimization of employees' work, income and cost analysis by: clinic location, services, personnel. Systems also support warehousing of medicines and sterile materials.
- Allows to split costs of medical procedures into elements.
- Confidential data safety.
- Automation and shortened report preparation time.



- Daily access to updated data
- Access to reports via internet browser and mobile devices with android system
- Subscriptions, which enable automatic generation of reports, and their email distribution on scheduled time to predefined recipients.
- Analytical tools are flexible, and their rebuilding and modifications are possibly easy.
- Possibility to prepare advanced management cockpits, that show company's performance key indicators.
- Indicators are up-to-date, based on latest data from source systems.
- Possibility to model different scenarios enables to check how financial results may be influenced by optimistic and pessimistic events. Thanks to this solution it is possible to make simulations and for example assess how will change profitability of medical procedures if costs of media or personnel will change.

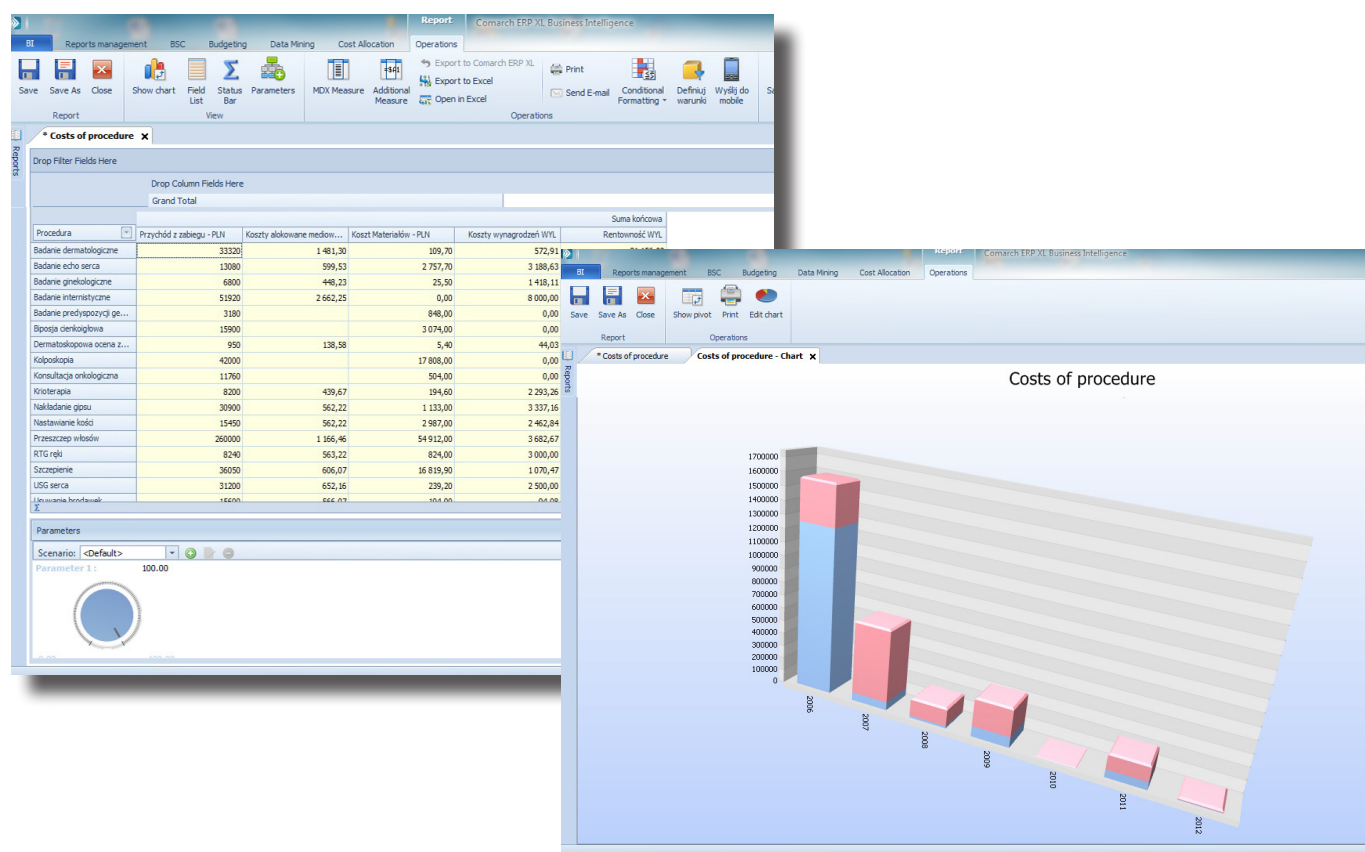
## Cost optimization

Comarch Business Intelligence is a tool that enables advanced cost optimization. This process enables proportional cost split, using predefined schema, e.g. cost split by rental fee, by size of rented space.

Cost splitting is done automatically at defined by user time and date. Processing itself is very simple and accessible for business users, because tool is intuitive.

Gained data may be used altogether with the rest of data, e.g. having profit, and adding all costs will help to calculate profitability of each position.

It enables to calculate exact costs per single medical procedure taking into consideration costs of personnel or medical materials. Having calculated income from each medical procedure it is possible to identify procedures, medical packages, or doctors that gain most profits, and elements that shall be modified to increase profitability.



## Reporting

Comarch Business Intelligence solution for medicine enables automation of reporting processes thanks to possibility of report predefining, which are then automatically loaded with up-to date data from source systems.

Comarch Business Intelligence tool provides:

- Expanded system of analyses and reports, showing e.g. profitability of clinic, by different criteria such as: medical procedure, doctor, service, or location. Precise analysis of profits and costs split by kinds of services, organizational units, doctors, patients (individual and corporate ones).
- Possibility to analyze profitability of medical packages and contracts with business partners, NHS, which enables to optimize medical packages to maximize profitability.
- Detailed analytics of enables searching for areas where cost cutting, optimization of expenditures, and time saving may be implemented (e.g. while analyzing time of waiting for visit, or hourly occupancy).
- Possibility to support management of data from dispensary, hospital, pharmacy, inventory, laboratory or diagnostics.
- Possibility to control expiry date of medical materials, management of inventory ageing, and setting up automatic alerts concerning approaching expiry date of vaccines.



## Summary

Comarch Business Intelligence solutions for medical industry are designed to support managers, who would need to manage modern company in effective way. Complexity of proposed solution assures, that managers would have tool for reliable management of processes, costs, and human and material resources.

System dedicated for medical industry is a tool of management control, enabling quick decision-making process, and solving of current problems, that managers of medical clinics have to cope with.

**Comarch SA**  
Al. Jana Pawła II 41g  
31-864 Cracow  
Poland  
**phone:** + 48 12 687 73 52  
**e-mail:** business.intelligence@comarch.pl

**[www.bi.comarch.pl](http://www.bi.comarch.pl)**

[www.comarch.com](http://www.comarch.com) [www.comarch.de](http://www.comarch.de) [www.comarch.ru](http://www.comarch.ru) [www.comarch.fr](http://www.comarch.fr) [www.comarch.pl](http://www.comarch.pl)

Comarch Spółka Akcyjna with its registered seat in Kraków at Aleja Jana Pawła II 39A, entered in the National Court Register kept by the District Court for Kraków- Śródmieście in Kraków, the 11th Commercial Division of the National Court Register under no. KRS 000057567. The share capital amounts to 8,051,637,00 zł. The share capital was fully paid. NIP 677-00-65-406

